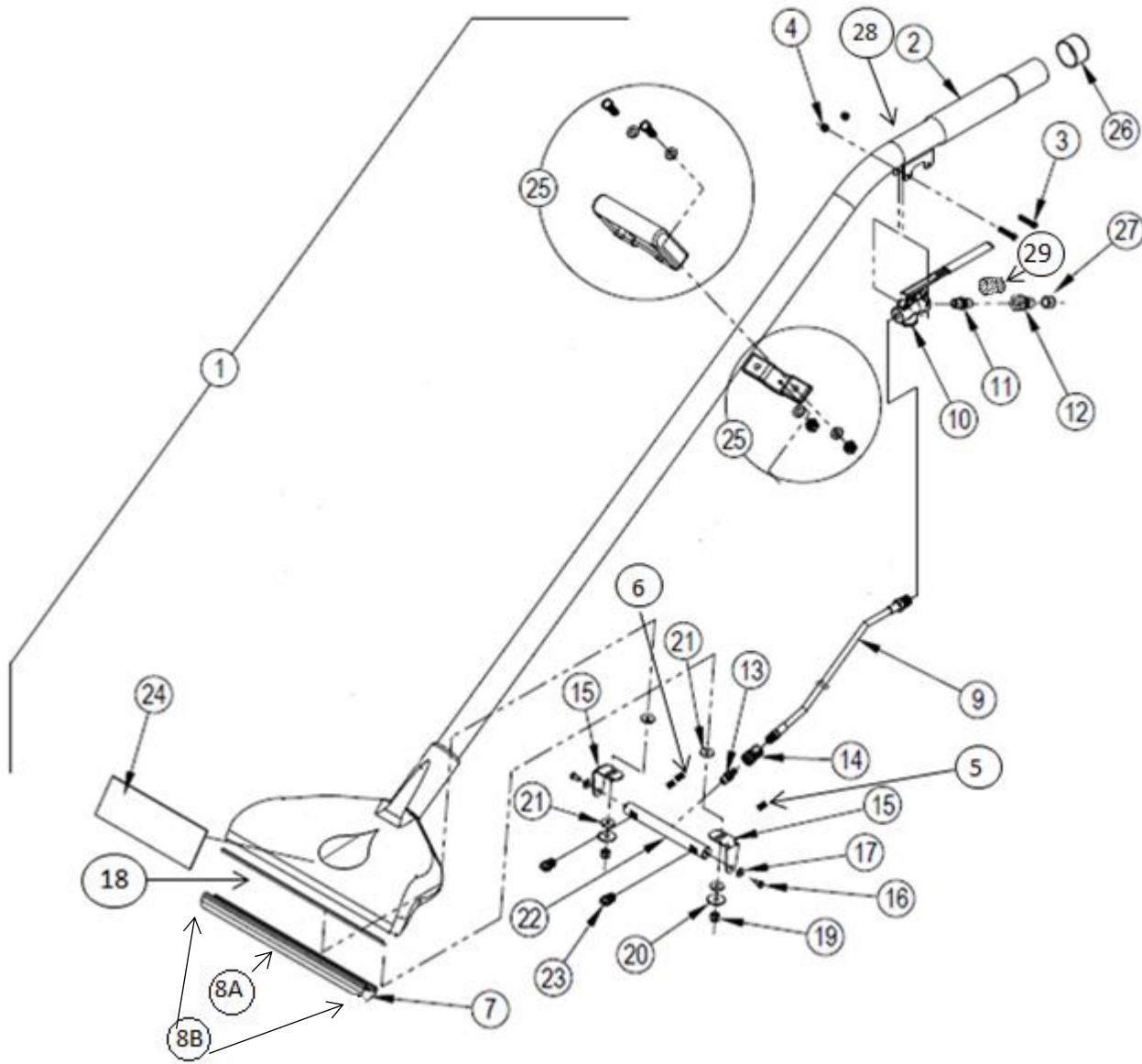


Sharp Shooter 13" Carpet Wand



| Item No. | Part No. | QTY | Description |
|----------|--------------|-----|----------------------------------|
| 1 | 05-10030-001 | 1 | Full Assembly |
| 2 | 41-09518 | 1 | Handle Grip |
| 3 | 34-00020 | 2 | Mounting Screw |
| 4 | 90-00245 | 2 | Mounting Nut |
| 5 | 41-00209 | 1 | SS Check Valve |
| 6 | 41-00202 | 1 | 1/8" Brass Nipple |
| 7 | 39-00182 | 1 | 13" Glide |
| 8A | 90-00355 | 2 | Glide Center screw |
| 8B | 90-00270 | 2 | Glide Side screw |
| 9 | 41-00605 | 1 | Pressure line |
| 10 | 41-01814 | 1 | Kingston Spray Trigger |
| 11 | 41-00044 | 1 | 1/4 Brass Nipple |
| 12 | 41-00007 | 1 | 1/4 Male QD |
| 13 | 41-00186 | 1 | 1/8 Male QD |
| 14 | 41-00144 | 1 | 1/8 Female QD |
| 15 | 35-00012 | 2 | Spray Bar Bracket |
| 16 | 34-00043 | 2 | Bracket Screw |
| 17 | 90-00235 | 2 | Bracket Washer |
| 18 | 41-01319 | 1 | 13" Glide Gasket |
| 19 | 90-00241 | 2 | Spray Bar Mount Nut |
| 20 | 90-00238 | 4 | Stainless Washer |
| 21 | 31-00009 | 2 | Rubber Washer |
| 22 | 43-00021 | 1 | Spray Bar Manifold |
| 23A | 43-00005 | 2 | Spray Tips (2.0 Orifice) [Extra] |
| 23B | 43-00003 | 2 | Spray Tips (1.0 Orifice) |
| 24 | 22-00054 | 1 | Sharp Shooter Label |
| 25 | 41-09520 | 1 | Handle Assembly |
| 26 | 41-00051 | 1 | End Cap 1.5" |
| 27 | 41-00145 | 1 | End cap 0.625" |
| 28 | 35-00028 | 1 | Bracket, Spray Trigger |
| 29 | 43-00023 | 1 | Filter |