

ProForce Armor Gloves

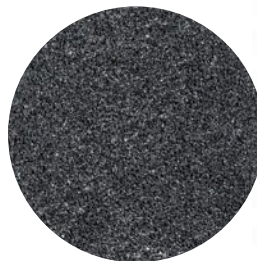
HPPE Cut-Resistant, Anti-Impact Shell with Black Nitrile Coating

Premium level hand protection. High performance HPPE ANSI A3 cut-resistant gloves designed for protection of hands from cuts, scratches and abrasions, which are the number one cause of job site injuries.

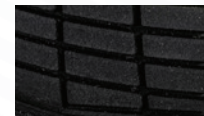
Work applications include demolition, restoration work, construction, cutting applications, sheet metal work, and handling of sharp-edged material and waste.

Features

- 13-gauge gray speckled high-performance HPPE shell for protection and greater cut resistance up to the wrist
- Anti-impact Thermo Plastic Rubber (TPR) molded back of the hand, knuckles, and fingers for excellent protection while still offering high dexterity and cut resistance
- ANSI A3 cut level protection
- Textured nitrile coated palm for abrasion and cut resistance
- Knitted wrist protects against dirt and debris entering the glove
- Excellent grip performance in oily, wet, or dry applications
- Color coded for easy size identification
- Seamless construction offers superior breathability, comfort and fit throughout the work day
- Tear resistant
- Washable



Palm Detail



Back-of-Hand Detail



Wrist Detail

ProForce Armor Gloves

Item	Size
2611-0155	Small
2613-0157	Medium
2614-0158	Large

Item	Size
2615-0159	X-Large
2616-0150	2X-Large



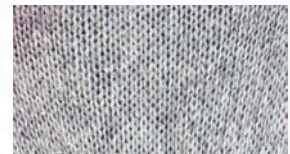
ProForce Ranger Gloves

Cotton Blended Shell with Blue Latex Coating

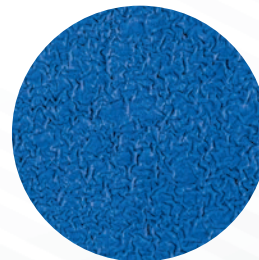
Designed for durability and protection for work applications such as general contracting, abatement, restoration, warehousing, tile work, and landscaping.

Features

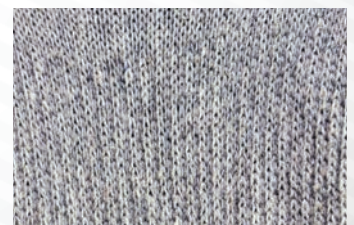
- 10-Gauge cotton blended shell for comfort and breathability in the everyday work environment
- Textured dipped blue latex palm and fingers offers exceptional grip
- Puncture resistant
- Curved fingers follow the natural shape of the hand for added comfort, dexterity and flexibility
- Good performance where oily and light liquids are present
- Abrasion resistant for extra protection



Back-of-Hand Detail



Palm Detail



Wrist Detail

ProForce Ranger Shell

Item	Size	Item	Size
2670-0334	Small	2651-0634	Large
2671-0335	Medium	2673-0337	X-Large

ProForce Sentry Gloves

HPPE ANSI A3 Cut-Resistant Shell with Polyurethane Coating

Designed for protection of hands from cuts, scratches and abrasions when handling sharp and abrasive materials.

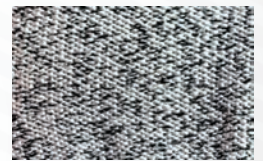
Work applications include demolition, construction, remediation, abatement, floor removal, metal stamping, and glass handling.

Features

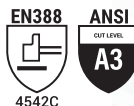
- 13-gauge gray speckled high performance HPPE shell for protection and greater cut resistance up to the wrist
- Polyurethane palm coated for abrasion and cut resistance
- High dexterity and flexibility for comfort throughout the day
- ANSI A3 cut level protection
- Breathable polyurethane coated helps keeps hands cool and dry throughout the day
- Good performance in oily, wet, or dry applications
- Color coded wrist for easy size identification



Palm Detail



Back-of-Hand Detail



ProForce Sentry Gloves

Item	Size
2651-0937	Small
2652-0938	Medium
2653-0939	Large

Item	Size
2654-0930	X-Large
2655-0931	2X-Large

ProForce Sentry Sleeve

HPPE Cut-Resistant with Thumbhole and Velcro Closure

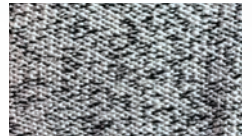
Designed for comfort and protection for work applications such as demolition, professional maintenance, floor removal, restoration, abatement, and recycling and sanitation workers.

Features

- High performance HPPE shell for cut protection of the wrist and forearm
- ANSI A3 cut level protection
- Provides comfort and flexibility throughout the day
- Adjustable Velcro closure for a more secure fit to protect against cuts and abrasions
- 18" long for extra protection of the forearm
- Universal Fit
- Thumbhole for secure fit



Wrist Detail

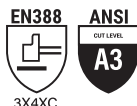


Back-of-Hand Detail



ProForce Sentry Sleeve

Item	Size
2656-0932	Universal



ProForce Recon Gloves

Polyester Shell with Polyurethane Coating

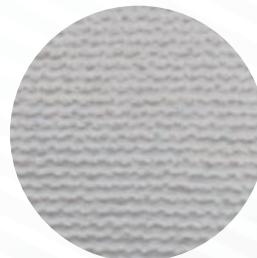
Designed for flexibility and high dexterity in work applications such as general assembly, abatement and light-duty applications.

Features

- 13-gauge breathable polyester shell for comfort in the everyday work environment
- Light weight polyurethane coated palm and fingers offer exceptional dexterity
- Color coded wrists for easy size identification



Back-of-Hand Detail



Palm Detail



Wrist Detail

ProForce ReCon Gloves

Item	Size
2657-0933	Medium
2658-0934	Large
2659-0935	X-Large

ProForce Blue Gloves

Cotton String Knit Shell with PVC Dots on One Side

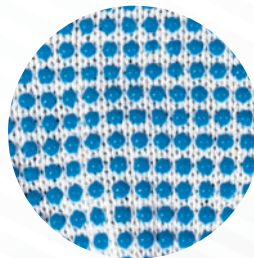
Designed for protection and comfort for shipping, warehousing, abatement work and general-purpose applications.

Features

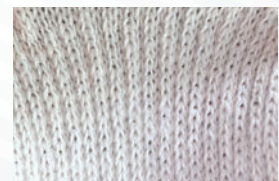
- 10-gauge string knit poly/cotton blend keeps your hands safe and comfortable
- Heavy duty blue PVC dots allow for easy grip when working with tools
- Light weight and breathable
- Single dotted design



Back-of-Hand Detail



Palm Detail



Wrist Detail

ProForce Blue Gloves

Item	Size
2660-0039	Universal

ProForce Delta Gloves

Nylon and Spandex Shell with Microfine Foam Coating

Designed for comfort and dexterity in work applications, including construction, restoration, material handling, assembly, automotive and oil industries.

Features

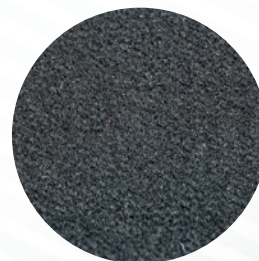
- 15-gauge Nylon and spandex shell for high dexterity, comfort, and secure fit for the everyday working environment
- Breathable MicroFine Foam coating helps keep hands cool and dry throughout the day with excellent grip even in oily environments
- Reinforced thumb crotch
- Color coded wrist for easy size identification



ProForce Delta Gloves

Item	Size
2661-0030	Small
2662-0031	Medium
2663-0032	Large

Item	Size
2664-0033	X-Large
2670-0031	2X-Large









Palm Detail



Back-of-Hand Detail

PROFORCE

PERFORMANCE CHART

					
blue	recon	ranger	delta	sentry	armor
Cotton String Knit Shell with Blue Dots on One Side	Polyester Shell with Polyurethane Coating	Cotton Blended Shell with Blue Latex Coating	Nylon & Spandex Shell with Microfoam Coating	HPPE Cut Resistant Shell with Polyurethane Coating ANSI Cut Level A3	HPPE Cut Resistant Anti-Impact with Nitrile Back-of-Hand Protection ANSI Cut Level A3
One Size	MD - XL	SM - XL	SM - 2XL	SM - 2XL	SM - 2XL
★★★	★★★★★	★★★	★★★★★	★★★	★★★
★★★	★★★★★	★★★	★★★★★	★★★	★★★
★	★★★	★★★★★	★★★★★	★★★★★	★★★★★
★	★★★	★★★	★★★★★	★★★★★	★★★★★
No	No	No	No	No	Yes
N/A	N/A	N/A	N/A	ANSI A3	ANSI A3

RATINGS KEY ★ FAIR → BEST

★★★★★

★★★★

★★★

★★

★