

CDS 4.8™



Direct Drive Truckmount

For the Next Generation Chevy/GMC V8 Van 6.6L Engine

- ✓ GD Tri-Flow 408 Blower
- ✓ Standard Electric Clutch
- ✓ 1200 PSI Pump
- ✓ Residential, Large Commercial
- ✓ Longer Hose Runs
- ✓ 485+ CFM
- ✓ Console Weight: 650 lbs
- ✓ RPM Settings: 1,300 (low), 1,400 (medium), 1,500 (high)
- ✓ Salsa Heat Booster System

Standard Equipment

- Runtime hour meter
- Chemical flow meter (0-10 GPH)
- Chemical flow control valve
- Vacuum gauge (0"-30" Hg)
- Solution pressure gauge (0-1,500 PSI)
- Solution pressure adjustment
- Pre-wired pump-in switch
- Pre-wired AWDS Switch
- Fresh water inlet
- Water system drain valve
- Engine tachometer (0-3,500 RPM)
- Electronic throttle control
- Electrical circuit protection (resettable)
- Temperature control valve
- Solution pump switch
- 3 speed control
- CDS Power Transfer package
- Front compartment cowling & armrests
- Top-mounted gauge cluster & control console
- Dual wand solution connections
- Dual wand vacuum connections
- Freeze guard system
- Safety wheel chocks
- 1 1/2" Evolution wand
- 10 ft x 1 1/2" whip line



- 10 ft x 1 1/2" drain line
- Solution Hose Length: 100 ft x 1/4"
- Vacuum Hose Length: 100 ft x 2"
- Chemical jug holder
- 5 gallon chemical jug
- Operation & maintenance manual
- Embroidered HydraMaster jacket
- Van decal

Continued, Uninterrupted Cleaning

The 4.8's large capacity, 100 gallon MaxxAir recovery tank delivers the convenience of continued, uninterrupted cleaning. A newly designed easy-clean stainless steel lint basket makes daily maintenance less of a chore. The LED status panel tells the operator what's going on with the machine. The chemical jug holder keeps things looking sharp.

CDS Design Concept

The concept behind the design of the CDS is to provide a powerful, reliable cleaning system that uses the power and heat source already provided by the host vehicle. The rugged and reliable engineering that has, for the last four decades, made the CDS the most popular van powered system in the industry. The result is a vehicle that you can outfit as you choose; with a complete custom interior package including fresh water tank, reels, shelves, and accessories.



VEHICLES: Installation available in Chevy/GMC 2500/3500 Express Vans with a V-8, 6.6L engine, model year 2021 or newer. Always consult with your local HydraMaster Distributor to inquire on a particular van before purchasing the van. For Low Mileage Chevy/GMC Vans with V-8 engines built prior to the 2021 model year, inquire with your distributor for availability to install the CDS 4.8 with a different front end power transfer kit.



CDS Hose Pass-Through Kit

Allows operation of unit with vehicle doors closed and locked. Reduces noise by 30% A no-cost option, upon request. One per machine.



CDS 4.8™



Direct Drive Truckmount

For the Next Generation Chevy/GMC V8 Van 6.6L Engine

- ✓ Streamlined power transfer system
- ✓ Increased vacuum performance
- ✓ More Consistent Heat Delivery System
- ✓ Space saving design



CDS 4.8 SV Enhancements

- **Increased vacuum performance** with the GD Tri-Flow 408 Blower increases vacuum CFM by 25%
- **Streamlined power transfer system** designed for the next generation Chevy/GMC V-8 equipped with the 6.6 L engine
- **New Plate Heat Exchanger (PHE) heat exchanger technology** is replacing the shell and tube heat exchangers tied to vehicle coolant system. PHE's are smaller, weigh less, and take up less space but achieve the same level of heat delivery even more consistently
- **Space saving design** continues to provide the most room in the back of your van for all of your other gear
- **Sacrificial anodes in solution recovery tank** reduce corrosion and extend tank life
- **Cast aluminum adapters** on blower and solution recovery tank resist corrosion and last longer
- **Tighter fitting power pack cowling** reduces noise and keeps van cooler
- **Relocation of start-stop module controller** for easier access and smoother engine shutdown
- **Belt guard on power pack** for increased safety
- **The SALSA Heat Booster System now comes standard** and utilizes **less fin density for lower maintenance** without sacrificing heat accumulation



“ I need a machine to clean any surface at anytime of the day or night at any location. It needs to leave me room in my rig for the rest of my equipment, be easy to maintain, and make me money for a long, long time.

I need a HydraMaster CDS ”

Item #: 751-011-744-10



www.hydramaster.com | 800.426.1301 | 425.775.7272



www.hydramaster.com | 800.426.1301 | 425.775.7272

Continuing to Alter the Footprint of Direct Drive Truckmounts Through Innovative Leadership and Design

CDS 4.8™



Direct Drive Truckmount

For the Next Generation Chevy/GMC V8 Van 6.6L Engine

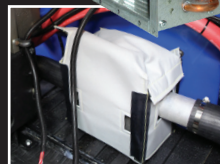
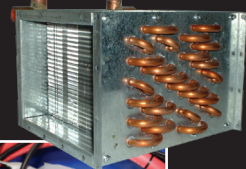
Power Transfer System

- Streamlined Power Transfer System designed for 2021 and beyond next generation Chevy/GMC V8 vans equipped with the 6.6L engine.
- Balanced double U-jointed self-aligned drive shaft
- Heavy duty electrically activated clutch
- Improved reliability, reduced vibration
- Shaft capture safety system
- High temperature/high performance bearings, seals and grease
- Easy access zerks for drive shaft maintenance



Heating System

- Multi-Stage Thermal Accumulation and Heat Exchanger System
- Up to 235 ° F stable consistent solution temperature at typical carpet cleaning pressure and flow
- New Plate Heat Exchanger (PHE) heat exchanger technology is tied to vehicle coolant system. PHE's are smaller, weigh less, and take up less space but achieve the same level of heat delivery with even more consistency
- The new SALSA Heat Booster System, which now comes standard with the CDS, is tied to the blower exhaust system and utilizes less maintenance without sacrificing heat accumulation. Easier access to clean out improves serviceability.
- Industry first heat exchanger blanket enhances solution temperature and protects the operator from hot surfaces.

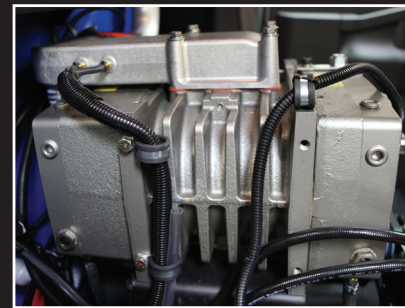


Reliable and Robust Design

- The industry's most proven and #1 selling direct drive truckmount - utilizing the power and heat source already provided by the host vehicle.
- Front and rear CDS drive shaft safety rings protect van engine.
- CDS Electronic Speed Control increases vacuum performance and reduces fuel consumption. (~1.5gph)
 - Harwill float with enhanced calibration process more accurately shuts down the machine when waste tank is full.

Vacuum System

- Durable TriFlow Gardner Denver 408 Tri-Lobe Blower provides 25% more vacuum power.
- Reduced Drying Times, High Speed - 3600 RPM - 485 CFM @ 10" Hg
- Powerful Ogura Clutch (176 ft lbs) operates at an efficiency of 35% of the available torque capacity, reducing the wear and tear on the clutch.
- New efficient flow cast Aluminum inlet adapter and aluminum outlet adapter reduces corrosion.
- Oil level sight windows
- Pulsation and sound reduced for quieter operation



Solution (Pressure) Delivery System

- General HTXS1813S Solution Pump
- 4 GPM Volume
- Operator Adjustable 0-1200 PSI solution pressure.
- Smooth Operation 3-Stage Plunger Design.



Last-Step Chemical System

Equipped with a stainless steel Chemical Pulse Pump. Last-Step Chemical Injection means no chemicals pass through the water pump or heat exchangers.



Hassle-FREE Ownership Experience

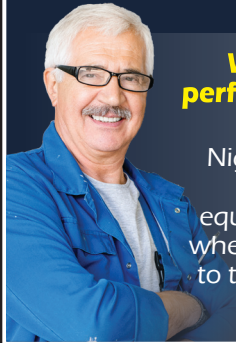
- 3 Year comprehensive "Bumper to bumper" warranty
- Service and Support through your local HydraMaster distributor
- Faster and more responsive warranty support
- 24/7/365 online and app based troubleshooting support
- Best technical support team in the industry



Made in the USA

What Do You Need Your Truckmount To Do?

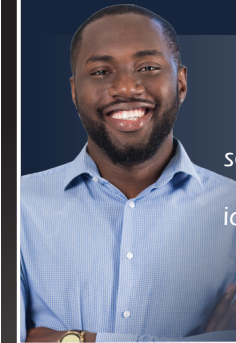
" I need my machine to make me money anytime, anywhere "



When security, quiet operation and performance are most important, you rely on your CDS Direct Drive.

Night time commercial work? Bad weather days where you need to protect your equipment from the elements? Jobs in areas where your van needs to be secure? Say "YES" to those jobs and make that cash with a CDS Direct Drive truckmount.

" My machine needs to make money no matter the surface "



Flexible and powerful performance allows for many uses.

The CDS give you consistent hot cleaning solutions and pressures for whatever you are cleaning. A perfect cleaning machine and ideal for flood and water damage restoration work, pressure washing, stone, tile and concrete cleaning and more. More types of jobs, more money for you.

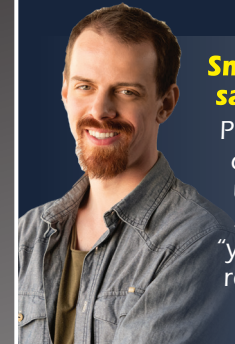
" My machine needs to make money for a long time "



Reliable. Durable. Dependable.

The CDS Direct Drive has the industry's longest proven track record of performance and success. HydraMaster longevity and reputation means we will be here for years to come to support you. Maximum return on investment and highest resale value in the industry.

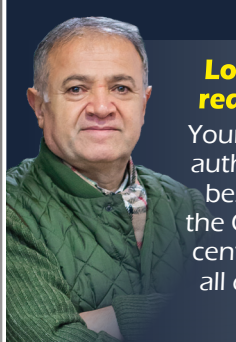
" I need my machine to leave enough room in my rig for all my other gear "



Smallest footprint in the industry. Compact, space saving design allows for flexibility in van set up.

Perfect for hauling restoration equipment (air movers, dehumidifiers, directed heat), power wands, RX20's, upholstery tools, rotary hard surface tools, chemical solutions, hauling rugs and furniture and more. Say "yes" to virtually any hard or textile surface cleaning or restoration job and make that cash with a CDS Direct Drive truckmount.

" I need my machine to make money even if I can't turn my own wrench "



Lower maintenance and ease of serviceability reduces costs and downtime, plain and simple.

Your CDS comes with a nationwide network of factory authorized warranty and service centers featuring the best distributors in the industry. The open design of the CDS makes for easy access to internal components, centrally located, protected wiring box, easy access to all drain hoses, means the daily, weekly and periodic maintenance is a breeze.

" It needs to make money when my techs are using it "



Simple-to-operate and easy to train your cleaning techs.

The CDS is the perfect choice for fleet operations. More of the largest carpet cleaning and restoration companies in the USA choose the HydraMaster CDS as their truckmount of choice more than any other truckmount.



Never Owned a Direct Drive Truckmount Before?

Do you have questions or want to learn more? Check out our Frequently Asked Questions page at HydraMaster.com/DirectDrives

