



**3M 6000 Series
Respirator Full Facepiece**

*User Instructions for 3M™ 6700 (Small) 07138 (Small),
6800 (Medium) 07139 (Medium), 6900 (Large) 07140
(Large) Full Facepieces*

(Keep these instructions for reference)

**07138, 07139, 07140 are catalog numbers only. NIOSH approved 3M™ 6700
(Small), 6800 (Medium) 6900, (Large) Full Facepiece.*



These *User Instructions* provide information about facepiece use only. Important information is provided in the *User Instructions* with each of the air filtration/supply air systems. Failure to follow *User Instructions* for the air filtration/supply air systems being used may result in sickness or death.

This respirator helps protect against certain airborne contaminants. **Misuse may result in sickness or death.** For proper use, see your supervisor, or *User Instructions* or call 3M at 1-800-243-4630. In Canada, call Technical Service at 1-800-267-4414.

Do not clean respirator with solvents.

Cleaning with solvents may degrade some respirator components and reduce respirator effectiveness. Inspect all respirator components before each use to ensure proper operating condition.

GENERAL SAFETY INFORMATION

Intended Use

The 3M™ 6000 Series Full Facepiece Respirators are designed to help provide respiratory protection against certain airborne contaminants when used in accordance with all use instructions and limitations and applicable safety and health regulations.

CAUTION

Failure to properly dispose of spent cartridges, filters, or respirators contaminated by hazardous materials can result in environmental harm. Handling, transportation and disposal of spent cartridges, filters, or respirators must comply with all applicable federal, state, and local laws and regulations.

USE INSTRUCTIONS AND LIMITATIONS

Important

Before use, the wearer must read and understand these *User Instructions*. Keep for reference. This product contains no components made from natural rubber latex.

Use For

Respiratory protection from certain airborne contaminants according to NIOSH approvals, OSHA limitations, in Canada CSA standard Z94.4 requirements, other applicable regulations and 3M instructions.

Do Not Use For

Concentrations of contaminants which are immediately dangerous to life or health, are unknown or when concentrations exceed 10 times the permissible exposure limit (PEL) in air purifying mode when qualitatively fit tested, 50 times the PEL in supplied air mode when quantitatively fit tested, 1000 times the PEL in supplied air mode, or according to specific OSHA standards or applicable government regulations, whichever is lower.

Use Instructions

1. Failure to follow all instructions and limitations on the use of this respirator and/or failure to wear this respirator during all times of exposure can reduce respirator effectiveness and may result in sickness or death.
2. Before occupational use of this respirator a written respiratory protection program must be implemented meeting all the requirements of OSHA 29 CFR 1910.134 such as training and fit testing and applicable OSHA substance specific standards. In Canada, CSA standard Z94.4 requirements must be met.
3. The airborne contaminants which can be dangerous to your health include those that are so small you cannot see them.
4. Leave contaminated area immediately and contact supervisor if you smell or taste contaminants or if dizziness, irritation, or other distress occurs.
5. Store respirator away from contaminated areas when not in use.
6. Dispose of used product in accordance with applicable regulations.

Use Limitations

1. This respirator does not supply oxygen when used in air-purifying mode. Do not use in atmospheres containing less than 19.5% oxygen.
2. Do not use when concentrations of contaminants are immediately dangerous to life and health, are unknown or when concentrations exceed 10 times the permissible exposure limit (PEL) in air purifying mode when qualitatively fit tested, 50 times the PEL when used in air purifying mode when quantitatively fit tested, 1000 times PEL in supplied air mode, or according to specific OSHA standards or applicable government regulations, whichever is lower.
3. Do not alter, abuse or misuse this respirator.
4. Do not use with beards or other facial hair or other conditions that prevent a good seal between the face and the faceseal of the respirator.

Time Use Limitations

1. If respirator becomes damaged, leave the contaminated area immediately and repair or replace the respirator.
2. Replace filters in accordance with the filter Time Use Limitations.
3. Replace cartridges in accordance with an established change schedule or earlier if smell, taste or irritation from contaminants is detected.

NIOSH Cautions and Limitations

The following restrictions may apply. See NIOSH Approval Label.

- A- Not for use in atmospheres containing less than 19.5 percent oxygen.
- B- Not for use in atmospheres immediately dangerous to life or health.
- C Do not exceed maximum use concentrations established by regulatory standards.
- D Air-line respirators can be used only when the respirators are supplied with respirable air meeting the requirements of CGA G-7.1 Grade D or higher quality.
- E- Use only the pressure ranges and hose lengths specified in the User's Instructions.
- F- Do not use powered air-purifying respirators if airflow is less than four cfm (115 lpm) for tight fitting facepieces or six cfm (170 lpm) for hoods and/or helmets.
- G- If airflow is cut off, switch to filter and/or cartridge or canister and immediately exit to clean air.
- H- Follow established cartridge and canister change schedules or observe ESLI to ensure that cartridge and canisters are replaced before breakthrough occurs.
- I- Contains electrical parts which have not been evaluated as an ignition source in flammable or explosive atmospheres by MSHA/NIOSH.
- J- Failure to properly use and maintain this product could result in injury or death.
- L- Follow the manufacturer's instructions for changing cartridges, canisters and/or filters.
- M- All approved respirators shall be selected, fitted, used, and maintained in accordance with MSHA, OSHA, and other applicable regulations.
- N- Never substitute, modify, add, or omit parts. Use only exact replacement parts in the configuration as specified by the manufacturer.
- O- Refer to User's Instructions, and/or maintenance manuals for information on use and maintenance of these respirators.
- P - NIOSH does not evaluate respirators for use as surgical masks.
- S- Special or critical user instructions and/or use limitations apply. Refer to User's Instructions before donning.

S-Special or Critical Use Instructions

3M™ Mercury Vapor Cartridges (6009 and 60929) are equipped with passive 3M™ End of Service Life Indicators (ESLI). The color change indicator must be readily visible when wearing the respirator without manipulation. If you cannot readily see the ESLI, do not use. Mercury vapor cartridges must be discarded when the ESLI changes color; or within 30 days of opening packaging; or when ESLI becomes dirty or damaged; or when odors of vapors or gases become noticeable, whichever occurs first. Mercury vapor has no odor.

To assemble 3M™ Dual Airline Combination Breathing Tubes with 3M™ Cartridges/Filters, the facepiece inhalation valves must be removed.

If the facepiece is to be used in air purifying mode (without using the 3M SA-1600 or SA-2600 breathing tubes), the inhalation valves must be replaced in the facepiece before use.

3M™ 6894 Nose Cup Assembly must be used in all 6000 Full Facepiece applications.

WARNING

OSHA Standard 29 CFR 1910.134 requires that employers provide breathing air for supplied air respirator systems which “shall meet at least the requirements of the specification for Grade D breathing air as described in the Compressed Gas Association Commodity Specification ANSI/CGA G-7.1-1997.” Testing of output air from a compressor against this standard is required prior to using with a supplied air respirator. In Canada, breathing air systems must be supplied with air which meets at least the requirements in Table 1 of CSA Standard Z180.1-00. Failure to do so may result in sickness or death.

Cartridge and Filter Selection and Approvals

Before using any of these products, the user must read the specific use, limitations and warning information or call OH&ESD Technical Service at 1-800-243-4630. In Canada call, Tech Service at 1-800-267-4414. Do not exceed maximum use concentrations established by local regulatory agencies. Cartridges/filters are approved as assemblies for use with 3M™ 6000 Series Facepieces. For NIOSH approval, refer to approval label.

LIST OF PRODUCTS

3M™ 6000 Series Full Facepiece Replacement Parts and Accessories

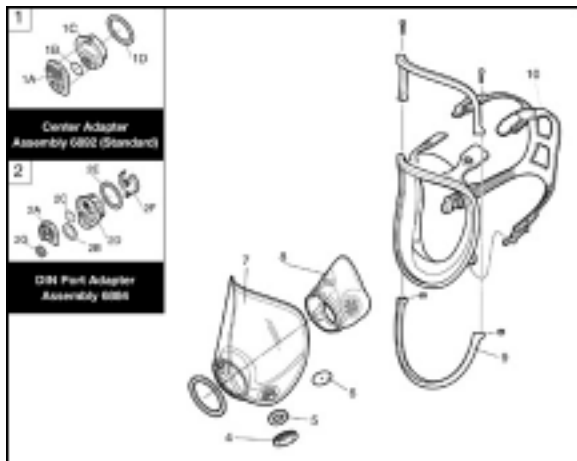
Full Facepiece with Standard Center Adapter (6892)

- 6700 Small
- 6800 Medium
- 6900 Large

****Automotive After Market Division (AAD)

	Number	****AAD part numbers are catalog numbers only. NIOSH approved as OH & ESD part numbers.	Product Name
1	6892	37003	Center Adapter Assembly (Standard)
1A	6890		Center Adapter Cover*
1B	6889	07143	Exhalation Valve
1C	6891		Center Adapter Base*
1D	6896		Center Adapter Gasket
2	6884		DIN Port Adapter Assembly
2A	6882		DIN Cover
2B	6876		Breathing Tube Gasket
2C	6889		Exhalation Valve
2D	6883		DIN Port Base
2E	6896		Center Adapter Gasket
2F	6881		DIN Air Director
2G	7890		Full Face Plug
4	6880		Bayonet Cap
5	6895	07145	Inhalation Gasket
6	6893	07144	Inhalation Valve
7	6898	37006	Lens Assembly
8	6894	37004	Nose cup Assembly
9	6899	37007	Frame Assembly w/ Screws
10	6897	37005	Head Harness Assembly

* Not available separately



3M™ Accessories

Number	****AAD part numbers are Catalog numbers only. NIOSH approved as OH & ESD part numbers.	Product Name
504		Respirator Cleaning Wipes
601		Quantitative Fit Test Adapter
6878	07141	Spectacle Kit
6885	07142	Lens Cover (100 pack)
6886		Tinted Lens Cover (25 pack)
7883		Neck Strap Assembly
7915-5		Tyvek® Shroud
7993		Welder's Shroud

3M™ Cartridges

Number	****AAD	Product Name	NIOSH Approval (for respiratory protection against the following contaminants up to fifty times the permissible exposure limit with Quantitative Fit Test)
6001	07146	Organic Vapor	Certain organic vapors
6002		Acid Gas	Chlorine, hydrogen chloride, and sulfur dioxide or chlorine dioxide or hydrogen sulfide (escape only).
6003	07147	Organic Vapor/Acid Gas	Certain organic vapors, chlorine, hydrogen chloride, and sulfur dioxide or hydrogen sulfide (escape only) or hydrogen fluoride
6004		Ammonia/Methylamine	Ammonia and methylamine
6005		Formaldehyde/Organic vapor	Formaldehyde and certain organic vapors
6006		Multi-Gas/Vapor	Certain organic vapors, chlorine, hydrogen chloride, chlorine dioxide, sulfur dioxide, hydrogen sulfide (escape only), ammonia/methylamine, formaldehyde or hydrogen fluoride
6009		Mercury Vapor/Chlorine Gas	Mercury vapor or chlorine gas
60921		Organic Vapor/P100	Certain organic vapors and particulates
60922		Acid Gas/P100	Chlorine, hydrogen chloride, and sulfur dioxide or chlorine dioxide or hydrogen sulfide (escape only) and particulates
60923		Organic Vapor/Acid Gas/P100	Certain organic vapors, chlorine, hydrogen chloride, and sulfur dioxide or hydrogen sulfide (escape only) or hydrogen fluoride and particulates
60924		Ammonia/Methylamine/P100	Ammonia and methylamine and particulates
60925		Formaldehyde/Organic Vapor/P100	Formaldehyde and certain organic vapors and particulates
60926		Multi-Gas/Vapor/P100	Certain organic vapors, chlorine, hydrogen chloride, chlorine dioxide, sulfur dioxide, hydrogen sulfide (escape only), ammonia/methylamine, formaldehyde or hydrogen fluoride and particulates
60928		Organic Vapor/Acid Gas/P100	Certain organic vapors, chlorine, hydrogen chloride, and sulfur dioxide or hydrogen sulfide (escape only) or hydrogen fluoride and particulates. ¹
60929		Mercury Vapor/Chlorine Gas/P100	Mercury vapor or chlorine gas and particulates

¹ 3M recommended for use against methylbromide or radioiodine up to 5 ppm with daily cartridge replacement.

Service Life of 3M™ 6000 Series Cartridges

3M™ 6000 Series Chemical Cartridges should be used before the expiration date on cartridge packaging. The useful service life of these cartridges will depend upon activity of wearer (breathing rate), specific type, volatility and concentration of contaminants and environmental conditions such as humidity, pressure, and temperature. Cartridges must be replaced in accordance with an established change schedule or earlier if smell, taste or irritation from contaminants is detected.

3M™ Filters, Adapters, Retainers

Note: Only 3M™ Filters approved under NIOSH 42 CFR 84 are to be used with the 3M™ 6000 Series Full Facepieces.

Number	****AAD	Product Name
501	07054	Filter Retainer for 5N11 and 5P71 Filters
502		Filter Adapter for 2000 Series and 7093 Filters
2071		P95 Particulate Filter
2076HF		P95 Particulate, hydrogen fluoride, with acid gas nuisance relief ¹
2078		P95 Particulate Filter, 3M recommended ozone protection ² , with organic vapor/acid gas nuisance relief ¹
2091		P100 Particulate Filter
2096		P100 Particulate Filter with acid gas nuisance relief ¹
2097		P100 Particulate Filter, 3M recommended ozone protection ² , with organic vapor nuisance relief ¹
5N11		N95 Particulate Filter
5P71	07194	P95 Particulate Filter
7093		P100 Particulate Filter

¹ 3M recommended for relief against nuisance levels of acid gas or organic vapors. Nuisance level refers to concentrations not exceeding OSHA PEL or applicable exposure limits, whichever is lower. Do not use for respiratory protection against acid gas/organic vapors.

² 3M recommended for ozone protection up to 10 times the OSHA PEL or applicable government occupational exposure limits, whichever is lower (not NIOSH approved for use against ozone).

3M particulate filters should be changed when an increase in breathing resistance is noticed.

Filters must be replaced if they become damaged, soiled or if increased breathing resistance occurs. N-series filters should not be used in environments containing oils. R-series filters may be limited to 8 hours of continuous or intermittent use if oil aerosols are present. In environments containing only oil aerosols, P-series filters should be replaced after 40 hours of use or 30 days, whichever is first.

ASSEMBLY INSTRUCTIONS

Note: Make certain 3M™ 6895 Inhalation Port Gaskets are in place on the facepiece bayonet connectors before installing filters, cartridges or breathing tubes.

Cartridge Assembly

1. Align the cartridge notch with the small solid bayonet lug on facepiece and push together.
2. Turn cartridge clockwise to stop (1/4 turn). Repeat with second cartridge. (Fig. 1)



Fig. 1

3M™ 2000 Series and 7093 Filter Assembly

1. Align opening of filter with filter attachment on facepiece.
2. Turn filter clockwise until it is firmly seated and cannot be further turned. Repeat for second filter (fig. 2)



Fig. 2

Filter Assembly (for 3M™ 5N11 and 5P71 Filters)

1. Place filter into 3M™ 501 Retainer so printed side of filter faces the cartridge.
Press cartridge into filter retainer. It should snap securely into filter retainer. When correctly installed, filter should completely cover face of cartridge. (Fig. 3)
2. To replace filter, remove retainer by lifting on TAB.



Fig. 3

3M™ 502 Adapter Assembly

1. Align adapter over cartridge. Engage front snap by squeezing front of cartridge and adapter together, placing thumbs of both hands over top of adapter and fingers along bottom sides of cartridge. (Fig. 4)
2. Engage back snap by squeezing back side of cartridge and adapter together using the same hand positions. An audible click should be heard as each snap is engaged. (Fig. 5) The 3M 502 adapter should not be removed or reused once engaged. It is not designed for reuse. Removal or reuse may result in leakage.



Fig. 4

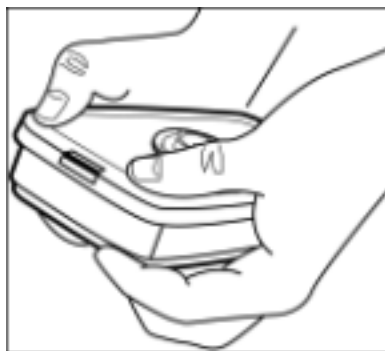


Fig. 5

3M™ 2000 Series and 7093 Filters/3M™ 502 Adapter Assembly

Place filter onto the filter holder so that filter comes into even contact with gasket. Twist clockwise one quarter turn until it is firmly seated and filter cannot be turned further. Repeat for second filter.

Note: The 3M 502 adapter once installed on a 3M™ 6000 Series Cartridge is not to be removed or reused. Removal and reuse may result in leakage.

3M™ SUPPLIED AIR SYSTEMS

3M™ Dual Airline Respirator Assembly

User must follow Dual Airline Supplied Air Respirators *User Instructions* provided with the 3M™ Dual Airline Adapter Kits.

Assembly of 3M™ Combination Dual Airline Respirator with Cartridges and Filters

The 3M™ SA-1600 (front-mounted) and SA-2600 (back-mounted) versions of the 3M dual airline breathing tubes allow use of selected, NIOSH-approved 3M™ 6000 Series Cartridges and 2000 Series Filters. For the listing of approved cartridges and filters, reference the NIOSH approval label included with 3M dual airline adapter kits.

To assemble 3M™ Dual Airline Combination Breathing Tubes with 3M Cartridges/Filters the facepiece, inhalation valves must be removed.

If the facepiece is to be used in air purifying mode (without using the 3M SA-1600 or SA-2600 breathing tubes), the inhalation valves must be replaced in the facepiece before use.

Using the 3M™ Combination Dual Airline Breathing Tubes without Cartridges and Filters

To use the 3M combination dual airline breathing tubes (SA-1600 and SA-2600) without cartridges or filters, attach a 3M™ 6880 Bayonet Cap to each outer bayonet mount on the dual airline breathing tube. When used as a straight, Type C, continuous flow supplied air respirator, the Assigned Protection Factor is 1000 times the PEL or TLV guidelines for full facepiece respirators.



The 3M™ Dual Airline is NIOSH approved only with the 6894 nose cup in place. Failure to do so may result in sickness or death.

FITTING INSTRUCTIONS

Must be followed each time respirator is worn.

Donning and User Seal Check

1. Fully loosen all four head straps, place facepiece on face and pull head harness to back of head. (Fig. 6).
2. Pull the ends of the four straps to adjust tightness, starting with the neck straps first, then the forehead straps. Do not over tighten the straps (Fig. 7).
3. Perform a positive and/or negative pressure user seal check each time the respirator is donned.



Fig. 6



Fig. 7

POSITIVE AND NEGATIVE PRESSURE USER SEAL CHECKS

Always check the seal of the respirator on your face before entering a contaminated area.

Positive Pressure Seal Check

1. Place the palm of your hand over the exhalation valve cover and exhale gently. If facepiece bulges slightly and no air leaks are detected between your face and the facepiece, a proper seal has been obtained (Fig. 8).
2. If faceseal air leakage is detected, reposition respirator on your face and/or readjust tension of the straps to eliminate leakage.

If you cannot achieve a proper seal, DO NOT enter the contaminated area. See your supervisor.

Negative Pressure Seal Check For 6000 Series Cartridges

1. Place palms of hands to cover face of cartridge or open area of 3M™ 501 Filter Retainer and inhale gently. If you feel facepiece collapse slightly and pull closer to your face with no leaks between the face and facepiece, a proper seal has been obtained (Fig. 9).
2. If faceseal air leakage is detected, reposition respirator on face and/or readjust tension of straps to eliminate leakage.

If you cannot achieve a proper seal, DO NOT enter the contaminated area. See your supervisor.

Note: Use of 3M 501 filter retainer may aid respirator wearer in conducting a negative pressure seal check.



Fig. 8



Fig. 9



Fig. 10

Negative Pressure Seal Check for 2000 Series Filters

1. Place your thumbs onto the center portion of the filters, restricting airflow through filters and inhale gently. If you feel facepiece collapse slightly and pull closer to your face with no leaks between the face and facepiece, a proper seal has been obtained (Fig. 10).
2. If faceseal air leakage is detected, reposition respirator on face and/or readjust tension of straps to eliminate the leakage.

If you cannot achieve a proper seal, DO NOT enter the contaminated area. See your supervisor.

Quantitative (QNFT) and Qualitative (QLFT) Testing

Note: Fit testing is a U.S. Occupational Safety and Health Administration (OSHA) and Canadian CSA Z94.4 Standard requirement. Therefore, either quantitative or qualitative fit testing must be conducted prior to the respirator being issued. (Quantitative Fit Testing (QNFT) can be conducted using a 3M™ 601 Fit Test Adapter and 42 CFR 84 P100 filters such as the 3M™ 2091 or 7093 Particulate Filters).

Qualitative Fit Testing (QLFT) with the 3M™ FT-10 or FT-30 Qualitative Fit Test Apparatus can be conducted using any of the NIOSH approved 42 CFR 84 particulate filters. Use of Qualitative Fit Testing may reduce the respirator's Assigned Protection Factor (APF). Reference U.S. OSHA 29CFR 1910.134.

Note: For further information concerning fit testing contact 3M OH&ESD Technical Service at 1-800-243-4630 or a 3M location in your region. In Canada, call Technical Service at 1-800-267-4414.

INSPECTION, CLEANING, AND STORAGE

Inspection

The 3M™ 6000 Series Respirator must be inspected before each use to ensure that it is in proper operating condition. The facepiece should be repaired or replaced upon observation of damaged or defective parts. The following inspection procedure is suggested.

1. Check facepiece for cracks, tears and dirt. Be certain facepiece, especially faceseal area, is not distorted.
2. Examine inhalation valves for signs of distortion, cracking or tearing.
3. Make sure that head straps are intact and have good elasticity.
4. Examine all plastic parts for signs of cracking or fatiguing. Make sure filter gaskets are properly seated and in good condition.

5. Remove exhalation valve cover and examine exhalation valve and valve seat for signs of dirt, distortion, cracking or tearing. Replace exhalation valve cover.
6. Inspect lens for any damage that may impair respirator performance or vision.

Cleaning and Storage

Cleaning is recommended after each use.



Do not clean with solvents.

Cleaning with solvents may degrade some respirator components and reduce respirator effectiveness. Inspect all respirator components before each use to ensure proper operating condition.

1. Remove cartridges, filters and/or breathing tubes. The center adapter, lens and face seal can also be removed if necessary.
2. Clean facepiece (excluding filters and cartridges), by immersing in warm cleaning solution, water temperature not to exceed 120°F (49°C), and scrub with soft brush until clean. Add neutral detergent if necessary. Do not use cleaners containing lanolin or other oils.
3. Disinfect facepiece by soaking in a solution of quaternary ammonia disinfectant or sodium hypochloride (1oz. [30ML] household bleach in 2 gallons [7.5L] of water), or other disinfectant.
4. Rinse in fresh, warm water and air dry in noncontaminated atmosphere.
5. Respirator components should be inspected prior to each use. A respirator with any damaged or deteriorated components should be repaired or discarded.
6. The cleaned respirator should be stored away from contaminated areas when not in use.

REPLACEMENT PART INSTRUCTIONS

3M™ Facepiece Assemblies For 6700/6800/6900

The facepiece consists of the head harness assembly, nose cup assembly, center adapter assembly, lens assembly, face seal (small, medium or large), and frame assembly (top, bottom, nuts and screws).

To disassemble lens assembly from face seal, remove the two Phillips screws from top frame. Then, pull the frame top and frame bottom away from the face seal. The frame top, frame bottom, face seal and the lens assembly have vertical line markings that indicate their positions relative to one another. Make certain these markings are aligned for reassembly.

3M™ 6892 Center Adapter Assembly Replacement

The center adapter assembly consists of center adapter base, cover, exhalation valve, and adapter gasket. It is secured to the center port of the lens with a bayonet style twist lock connection which compresses the sealing gasket.

To remove the center adapter from the facepiece:

1. Remove nose cup assembly by pulling away from center adapter inside facepiece (Fig. 11).
2. Grasp center adapter at cover and twist counter-clockwise 1/4 turn to disengage bayonet from facepiece lens.
3. Withdraw center adapter from lens center port.



Fig. 11

To install the center adapter into the facepiece:

1. Align tabs on center adapter base with notches in center port of facepiece lens.
2. Slide adapter into lens port (Fig. 12).
3. Grasp center adapter at cover and twist clockwise 1/4 turn to stop. Be certain center adapter gasket is properly in place and sealed, and that the adapter assembly is fully engaged.
4. Replace nose cup assembly.

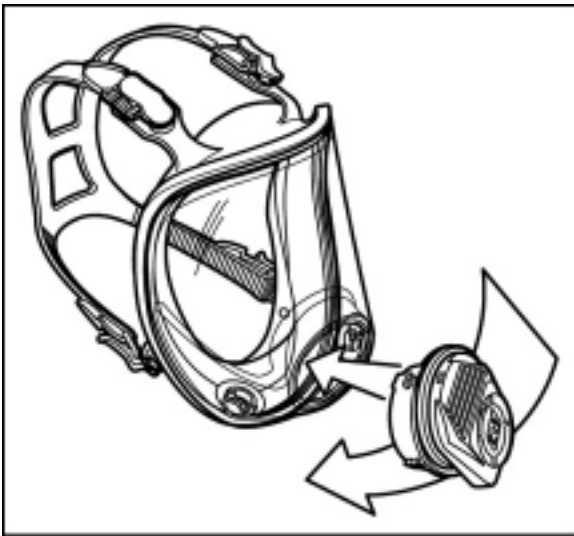


Fig. 12

Converting from the Standard Center Adapter (6892) to the DIN Port Adapter (6884)

Any 6000 Series Full Facepiece can be converted to the desired center adapter assembly by following the instructions in 3M Center Adapter Assembly Replacement and installing the 6880 bayonet caps with 6895 Inhalation Port Gaskets or the 7800 Full Face plug with 6876 Breathing Tube Gasket as appropriate.

3M™ 6894 Nose Cup Assembly Replacement

The 6894 nose cup assembly consists of a nose cup and inhalation valves. It is designed to install onto the center adapter and comfortably fit over the respirator wearer's mouth and nose to aid in purging exhaled breath and prevent lens fogging.

1. Remove the nose cup assembly by pulling away from center adapter inside facepiece. (Fig. 11)
2. To replace, position nose cup assembly onto center adapter aligning arrows. (Fig. 12)

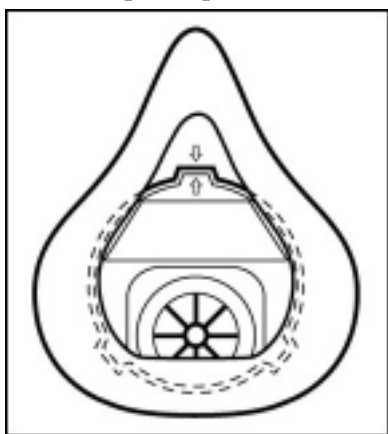


Fig. 13

3M™ 6896 Center Adapter Gasket Replacement

The 3M™ 6896 Center Adapter Gasket is designed to seal the interface between the center adapter and the lens of the 6000 Series Full Facepiece.

1. Remove nose cup assembly by pulling away from center adapter inside facepiece. (Fig. 11).
2. Grasp center adapter at cover and twist counter-clockwise 1/4 turn to disengage from facepiece lens. Withdraw center adapter from lens center port.
3. Remove old 6896 gasket from center adapter and replace with new 6896 gasket.
4. Re-install center adapter into facepiece lens (Fig. 12).
5. Replace nose cup assembly.

3M™ 6893 Inhalation Valve Replacement

Inhalation valves are located on posts at the inside of the facepiece inhalation ports and inside the nose cup inhalation ports. These valves should be inspected before each respirator use and replaced whenever valves become damaged or lost.

1. Remove existing valve(s) by lifting from post(s).
2. Install new valve(s) onto post(s). Be certain valve(s) is fully engaged under all three lugs on post(s), lays flat, and moves freely (spins) on post.

3M™ 6889 Exhalation Valve Replacement

1. Remove center adapter cover by pulling out from bottom latch.
2. Grasp valve and pull valve stem out from valve seat.
3. Inspect valve seat making certain it is clean and in good condition.
4. Place new 6889 valve over the exhalation port and push or press valve stem into center hole. Be certain the valve is fully seated and spins freely in mount (Fig. 14).
5. Replace adapter cover by engaging top and bottom snaps (latches).

Note: Conduct a negative pressure user seal check to ensure exhalation valve is functioning properly.

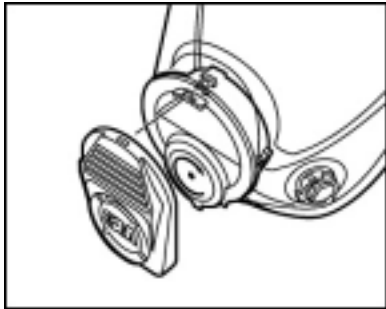


fig. 14

3M™ 6895 Inhalation Port Gasket Replacement

The 6895 gasket is designed to seal the interface between the bayonet attachment inhalation ports on the facepiece and filters/cartridges, or dual airline breathing tubes installed on the facepieces. The gaskets should be inspected with each filter/cartridge change and replaced whenever damaged or seal integrity is questionable.

1. Remove gaskets from facepiece inhalation port bayonet fittings.
2. Install new gaskets onto facepiece inhalation port bayonet fittings. Be certain gaskets are in proper position under all three bayonet lugs. (Fig. 15)

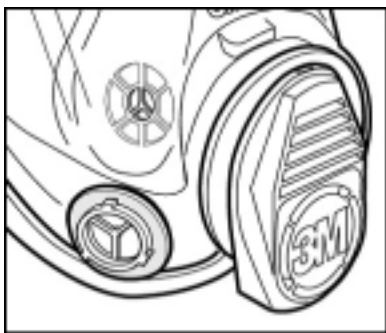


Fig 15

3M™ 6897 Head Harness Replacement

The 6897 head harness assembly consists of the head harness and buckles for the 3M 6000 series full facepiece. To replace the head harness assembly:

1. Remove existing harness by pulling attachment buttons out of holes in face seal tabs.
2. Attach new harness by pressing attachment buttons into holes in face seal tabs with twisting motion. Be certain buttons are fully seated. Head harness should be assembled with 2 short straps to top of respirator and 3M and 6897 marking on harness facing away from respirator. (Fig. 16)



Fig. 16

3M™ 6898 Lens Assembly

The 6898 lens assembly consists of a hard-coated polycarbonate lens with installed bayonet attachment inhalation port fittings, inhalation valves, and inhalation port filter/cartridge gaskets. The 6898 lens is replaceable by following these steps:

1. Remove nose cup assembly from inside facepiece. (Fig. 11)
2. Remove center adapter assembly by turning counter-clockwise 1/4 turn and withdrawing from lens center port.
3. Remove the (2) Phillips screws from the lens/face seal frame. Pull the frame top and frame bottom away from face seal.
4. Remove face seal from lens.
5. Place new lens and face seal together aligning marks at top and bottom. Position top and bottom frame, again aligning marks top and bottom. Install and securely tighten screws. Make certain alignment marks are properly aligned top and bottom with all components (Fig. 17).
6. Install center adapter assembly (Fig. 12).
7. Replace nose cup assembly (Fig. 11).

3M™ 6899 Frame Kit

The 6899 frame kit includes a frame top, frame bottom, (2) Phillips head screws and (2) hex head nuts. The frame kit secures and seals the 3M 6000 series full facepiece facesal to the 3M 6898 lens assembly.

1. After assembling the facesal onto the lens, matching top and bottom alignment marks, position top frame, over lens and facesal, aligning center vertical marks, then press in place.
2. Position bottom frame, aligning center vertical mark, and press in place. (Fig. 17) Insert and tighten Phillips head screws. Make certain parts are properly aligned and sealed together.

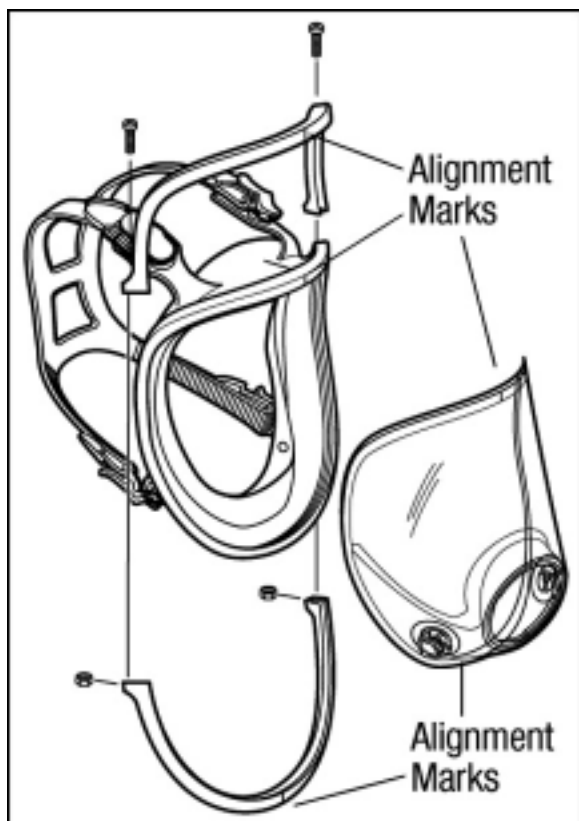


Fig. 17

FOR MORE INFORMATION and assistance on 3M occupational health and environmental safety products, contact your local 3M representative or call 3M OH&ESD Technical Service toll free in U.S.A., 1-800-243-4630. In Canada, call Technical Service at 1-800-267-4414.

U.S. PATENTS	5,924,420
	Des. 378,610
	Des. 379,160
	Des.388,872
	Des. 490,744

**Exported by/Exporté par/
Exportado por:
3M Occupational Health and
Environmental Safety Division**

3M Center, Building 235-2W-70
P.O. Box 33010
St. Paul, MN 55133-3010

©3M 2000

38-9017-1959-1

Printed in the U. S. A.

**Exported by/Exporté par/Exportado por
3M Automotive After market Division**

3M Center Building 223-6N-01
St. Paul, MN 55144-1000
Made in U.S.A.