

A white line-art illustration of a battery sprayer is set against a dark blue circular background on the left side of the page. The sprayer features a tank, a pump handle, a spray wand, and a single front wheel. The illustration is partially obscured by the circular background.

Model #: 2678-0647

OPERATION GUIDE



HYDRO-FORCE®

Innovating since 1974

**HYDRO-FORCE BPS9 PROFESSIONAL
HEAVY DUTY WHEELED CART BATTERY SPRAYER - 9 GI**

9-GALLON TANK CAPACITY



ATTENTION

Please read the following information carefully. User must read and understand the entire manual before operating the sprayer. Failure to follow instructions or improper use could lead to sprayer failure and possible serious injuries.

- Never spray flammable, caustic, acidic, heat, pressure, or gas producing chemicals.
- Always read and follow chemical manufacturer's instructions before use with this sprayer as some chemicals may be hazardous when used with this sprayer.
- Never leave chemicals or solutions sitting in your sprayer after using.
- After using sprayer with chemicals, it is important to spray with fresh water for 3-5 minutes to ensure residual chemicals in the gun, wand, tank, pump, and hose are cleaned out.
- Read and follow all instructions and cautions on the label of products used in this sprayer.
- Do not store your sprayer in extremely high temperatures. Heat can lead to the build-up of pressure within the sprayer, resulting in a possible explosion.
- Do not try to make modifications to the sprayer. Always use **Hydro-Force**® branded replacement parts from the manufacturer.
- Do not use batteries that are wet or have been damaged.
- Inspect sprayer hose, power knob, wand, and gun for damage or loose connections before each use.
- Do not lift or carry the sprayer by the hose, or wand. Carry by the handle only.
- Only spray when the air is calm (no wind or air movement) to prevent chemical spray from drifting into unintended areas.
- Keep sprayer and all chemicals out of the reach of children.
- Remove chemicals and thoroughly clean the sprayer after each

use. Failure to clean the sprayer may cause contamination of subsequent applications, will cause premature spray wear, and void the sprayer warranty.

NOTES

- The sprayer may have residual water in it when first opened. This is due to quality testing every sprayer undergoes before leaving our factory.
- Some parts may be located under the tank lid when first assembling the sprayer.
- **THIS SPRAYER IS DESIGNED TO OPERATE WITH ONLY Hydro-Force® BRANDED BATTERIES. ANY OTHER BATTERIES COULD CAUSE SERIOUS HARM OR INJURY TO THE OPERATOR AND SERIOUS DAMAGE TO THE SPRAYER.**

This product contains chemicals, including lead, known to the state of California to cause birth defects and other reproductive harm.



When using chemicals, always wear protective clothing, including respiratory protection masks, gloves, eye protection, etc.



Do not dispose of Lithium-ion batteries with household waste; recycle where facilities exist.

OPERATING

- Do not allow familiarity with products to make you careless. Remember that a single moment of carelessness is sufficient to cause serious injury.
- Always wear eye protection with side shields when handling or operating this sprayer. Failure to do so could result in serious injury from chemical contact or flying dirt or debris.
- The Lithium-ion battery pack can be used in temperatures down to 32°F. When operating in cold temperatures, put the battery pack in the battery compartment and use the sprayer in a light duty application. After about a minute the battery pack will warm up and begin operating normally.
- Always use the correct power setting for your application. Using the correct PSI and flow rate will result in a safer and more thorough treatment. For calibration resources please contact Hydro-Force® technical support. (Note: Always refer to local, state, and federal laws and regulations regarding your application.)

- Do not use the sprayer if the power switch is not functioning correctly. Any power tool that cannot be controlled with the switch is dangerous and must be repaired.
- Remove battery before making any adjustments, changing accessories, or storing the sprayer. Disconnect the sprayer from the power source by removing the battery pack. These preventative safety measures reduce the risk of starting the sprayer accidentally.

STORING

- Store sprayer out of reach of children and do not allow persons unfamiliar with the power tool or these instructions to operate the sprayer. Power tools are dangerous in the hands of untrained users.
- Maintain sprayers and accessories. Check for misalignment or binding of moving parts, breakage of parts and any other condition that may affect the sprayers operation.

SAFETY

- Use the sprayer and accessories in accordance with these instructions, taking into consideration the working conditions and the work to be performed. Use of this sprayer for applications that it was not intended for could result in a hazardous situation.
- Keep handles and lift points dry, clean and free from oil and grease. Slippery handles and lift points do not allow for safe handling and control of the sprayer.
- Risk of fire or explosion: Never use this sprayer with liquids such as gasoline, ethanol, methanol, or any other flammable or gas producing chemicals. Do not use sprayer around sparks, flame, or smoke. Failure to adhere to these instructions may cause ignition, resulting in potential injury and damage to property.
- To reduce the risk of fire, personal injury, and product damage from a short circuit, never immerse the sprayer, battery, or charger in fluids. Do not place or store sprayer where it could fall or be pulled into a tub or sink. Corrosive or conductive fluids, such as seawater, certain industrial chemicals, and bleach or bleach containing products, etc., can cause a short circuit.
- Electric shock hazard: Never spray toward electrical outlets.
- Spray area must be well ventilated to avoid hazardous fume build-up. Always refer to the product label of the chemical being used for safety instructions and proper use practices.
- Avoid spraying on windy days. Spraying in windy conditions could cause chemicals to be blown onto persons, plants, or objects that are not intended to be sprayed.

SAFETY CONT.

- Do not store chemicals in the tank. Chemicals can degrade seals and hoses. Drain and clean sprayer after each use. Failure to do so may void the sprayer warranty.
- Remove gloves before handling battery pack. Chemicals may be damaging to plastics.
- Thoroughly inspect the interior, exterior, and all components of the sprayer before each use. Check for cracked and deteriorated hoses, leaks, clogged nozzles and missing or damaged parts. If damaged, ensure the sprayer is repaired before use. Many accidents are caused by poor maintenance.
- Always remove the battery pack from the sprayer before performing any maintenance, storing or draining of the sprayer.
- Do not eat or smoke while handling or operating the sprayer. Refer to the product label of the chemical being used for user safety practices.
- Do not use the battery compartment for storage.
- Always use common sense and be cautious when using the sprayer. It is not possible to anticipate every situation that could result in a dangerous outcome. Do not use this sprayer if you do not understand these operating instructions or if you feel the work is beyond your capability.



CONTACT INFO!

Please read and follow this manual carefully to ensure that you get the most out of your new sprayer. If you need assistance with the assembly or operation of your sprayer, please don't hesitate to contact your place of purchase for sales and service questions or contact us via the support methods below:

sales@hydroforce.com

+1 800.637.3789

TABLE OF CONTENTS

ABOUT

[page 6-7](#)

- 1.1 specifications.....page 6
- 1.2 what's in the box.....page 7

SET UP

[page 8-11](#)

- 2.1 sprayer assembly.....page 8
- 2.2 how to spray.....page 9
- 2.3 aftercare.....page 11

TROUBLESHOOT

[page 12-19](#)

- 3.1 common solutions.....page 12
- 3.2 replacement parts.....page 14
- 3.3 warranty.....page 18

WHAT IS YOUR SPRAYER CAPABLE OF?

This Hydro-Force® sprayer is a highly efficient sprayer that is suitable for spraying many kinds of chemicals and solutions.

Powered by a 18V Lithium-ion battery, this sprayer results in more efficiency than a manual sprayer. This sprayer can be operated continuously for up to 3 hours!

Hydro-Force® BPS9 SPRAYER Specifications

Model Number	2678-0647	Pump Type	Heavy-duty diaphragm
Battery Type	Lithium-ion	Spray Time	Up to 3 hours
Battery Voltage	18V	Pressure	Up to 115 psi
Battery Capacity	5.2Ah	Tank Capacity	9 gallon
Battery Charging Time	1 hour	Flow Rate	0.12-1.12 gal/min
Battery Cycle Life	1,000 cycles	Pump Life	1,000 hours
Battery Charger	21V/2.5A		





WHAT'S INSIDE

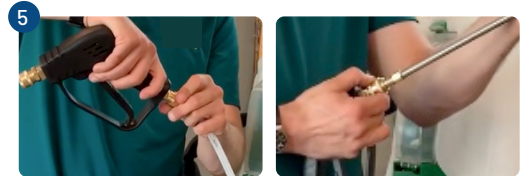
For part numbers and replacement parts please see page 14-16.

Part	Name	Part	Name	Part	Name
1	Tank Lid Blue BPS9 Pro	7	Battery 18V 5.2Ah Li-Ion BPS9 Pro	13	Fan Jet 60 degree BPS9 Pro
2	9-Gallon Tank	8	Battery Charger 2.5A BPS9 Pro	14	Cone Jet 120µm BPS9 Pro
3	Tank Strainer BPS9 Pro	9	Spray Wand Anti-drip BPS9 Pro	15	Fan Jet 110 degree BPS9 Pro
4	Clip Wand Blue BPS9 Pro	10	Gun Jet BPS9 Pro	16	Adapter QC to 110 degree Fan Jet BPS9 Pro
5	Holster Wand Blue BPS9 Pro	11	Hose Hanger BPS9 Pro	17	Wheel Replacement BPS9 Pro
6	Nuts & Bolts Kit BPS9 Pro (one set)	12	Hose Recoil BPS9 Pro	18	Handle Replacement BPS9 Pro

GETTING STARTED

Setting up your sprayer

1. Remove the nuts and bolts, holsters, nozzles, and pins from the tank strainer (3). Set aside.
2. Insert the trolley handle (18) to desired height into the tank (2). Tighten the two black knobs until the handle is secured. Place the hose brackets (11) at the back of the tank and attach with screws.
3. Place the clip wand (4) at the protruding holster mount on the tank. While holding the top holster, place a nut (6) on the side with the hexagonal slot and screw the bolt through the other side until it fastens into the nut. Repeat for the other slot and the bottom holster (5).
4. Place the trolley wheels (17) on either side of the sprayer. Slide a pin through each side of the center axle and widen to keep the wheels in place. You may have to bend the pin to secure it.
5. Take the spray gun (10) and attach it to the threaded fitting on the end of the hose (12). Tighten the fitting to ensure the gasket properly seals the connection.
6. If spraying with the stainless-steel spray wand (9), pull back on the collar of the quick-connect fitting on the spray gun. Insert the male wand quick-connect into the female spray gun fitting and push the collar back into its original position. Nozzles can be attached with the same process.
7. Snap the spray wand into the wand holster and place any unused nozzles into storage slots until ready to spray.



GETTING STARTED

Preparing to spray

1. Fully charge the battery prior to the first operation.

Note: the indicator lights will flash green while charging. Solid green lights mean the battery is fully charged.

2. In a separate container, prepare the solution you wish to spray according to the manufacturer's instructions. Open the tank lid and carefully pour the solution through the tank strainer. Securely tighten the tank lid.

3. Determine the nozzle you want to use (see right) and insert it into the spray wand or spray gun by pulling back on the collar of the quick-connect fitting. Remember to push the collar back into position.

a) 120 μ m cone nozzle .

b) Grey fan nozzle: flat 60° fan

c) 110° fan nozzle: Need to connect with the adapter.



4. Begin spraying by squeezing the spray trigger.

THE BATTERY

These batteries have been designed to provide maximum trouble-free life. However, like all batteries, they will eventually wear out. Do not disassemble battery pack and attempt to replace the batteries. Handling of these batteries especially when wearing rings or jewelry could result in serious burns.

- Recharge only with the charger specified by Hydro-Force®. A charger that is suitable for one type of battery pack may create a risk of fire when used with another batter pack.
- Only use sprayers specifically designated with their designated battery packs. Use of any other battery packs may create a risk of injury and fire.
- When battery pack is not in use, keep it away from other metal objects, like paper clips, coins, keys, nails, screws or other small metal objects, that can make a connection from one terminal to another. Shorting the battery terminals together may cause burns or fires.
- Under abusive conditions, liquid can be ejected from the battery; avoid contact. If contact accidentally occurs, flush with water. If liquid

contacts eyes, additionally seek medical help.

- Liquid ejected from the battery may cause irritation or burns.
- Do not use a battery pack or sprayer that is damaged or modified. Damaged or modified batteries may exhibit unpredictable behavior resulting in fire, explosion or risk of injury.
- Do not expose a battery pack or sprayer to fire or excessive temperature. Exposure to fire or temperature above 265°F (130°C) may cause explosion.
- Follow all charging instructions and do not charge the battery pack outside the temperature range specified in the instructions. Charging improperly or at a temperature outside the specified range may damage the battery and increase the risk of fire.

STORING BATTERY PACK LONGER THAN 30 DAYS

- Store the battery pack where the temperature is below 80°F and away from moisture.
- For long-term storage, regular charging of the battery is required

to maximize battery life. Check the battery level using the indicator lights every 4 weeks. Recharge the battery if it falls below 3 bars.

- Do not allow the battery to fully discharge.

BATTERY RECYCLING PREPARATION

- To preserve natural resources, please recycle or dispose of the batteries properly.
- This product contains Lithium-ion batteries. Local, state or federal laws may prohibit disposal of lithium-ion batteries in ordinary trash. Consult your local waste authority for information regarding available recycling and/or disposal options.

LITHIUM-ION BATTERY PACKS

- Lithium-ion batteries deliver fade free power for their entire run time. Lithium-ion batteries will not gradually lose power due to decreasing battery charge.

Instead, power from the battery pack will drop from full to zero once the full charge has been drained from the battery. Once this happens, recharging of the battery is required.

BATTERY PACK PROTECTION FEATURES

- Lithium-ion battery packs are designed with features that protect the lithium-ion cells and maximize battery life. If the sprayer stops during use, release the trigger to reset and resume operation. If the sprayer still doesn't work, the battery needs to be recharged.

If after 2 hours during the charging process, none of the LEDs are lit, remove the battery pack from the charger to avoid damaging the product. DO NOT insert another battery. Contact Customer Support for instructions on replacing the battery.

SPRAYER MAINTENANCE

Aftercare

1. Dispose of extra product based on the manufacturer's instructions. Rinse out any residual solution in the spray tank with warm, soapy water. Then, spray fresh water through the sprayer for 3 to 5 minutes to clear the tank of chemicals.
2. Disconnect the spray gun from the hose and allow the hose to hang down towards the ground; draining the hose of liquid.
3. Thoroughly dry the sprayer tank and clear nozzles of any buildup.
4. Store the sprayer in a dry, clean, and shaded place to protect it from extreme heat or frost.



NOTE

For long-term storage, regular charging of the battery is required to maximize battery life. Check the battery level using the indicator lights every 4 weeks. Recharge the battery if it falls below 3 bars. Do not allow the battery to fully discharge.

TROUBLESHOOTING

If your sprayer is not turning on, please contact your place of purchase for sales and service questions

or email us at sales@hydroforce.com or call **+1 (800) 637-3789**.

Problem	Possible Cause(s)	Solution
Sprayer does not turn on.	Dead battery	Charge the battery. If the battery will not charge, test the charger or contact Support for a replacement if applicable.
	Defective or damaged part	Contact your place of purchase for sales and service questions or email us at sales@hydroforce.com or call +1 (800) 637-3789 .
Leaks from tank.	Loose hose connection	Remove the plastic back plate and locate the hose connection to the pump. Tighten the hose lock nut.
Leaks from gun/nozzle.	Loose hose connection	Ensure the spray gun is fully tightened onto the threaded end of the hose.
Clogged pump / hose / gun / wand / nozzle	Not rinsing parts with water after use.	Take apart and thoroughly clean the parts. Rinse the sprayer with warm, soapy water after each use. Clean the pump inlet filter inside tank.

Problem	Possible Cause(s)	Solution
Dead battery.	Defective charger	If the LED indicator lights do not turn on or only one red LED is on after being on the charger for over 2 hours, test the charger with a multimeter. Replace if necessary.
	Damaged Lithium-Ion cells	If the battery receives no reading from a multimeter, a replacement battery is needed.
Pump makes a sound when sprayer is on, but output is limited.	Clog in filter or nozzle	Check parts for a clog. Using warm water, thoroughly clean the components; including pump inlet filter inside the tank.
	Clog in the pump	Remove the plastic cover plate and locate the pump. Remove then open the pump and clean out debris. Contact Support for assistance.

2694-3100



2698-3205

2690-3106



2690-3308



2691-3309



2690-3207

ACCESSORY & REPLACEMENT PARTS

Please contact your place of purchase for sales and service questions or email us at sales@hydroforce.com or call **+1(800) 637-3789**.

SKU	Name	SKU	Name
2694-3100	Hose Hanger BPS9 Pro	2698-3205	Tank Strainer BPS9 Pro
2690-3308	Clip Wand Blue BPS9 Pro	2690-3106	Tank Lid Blue BPS9 Pro
2691-3309	Holster Wand Blue BPS9 Pro	2690-3207	Wheel Replacement BPS9 Pro



SKU	Name	SKU	Name	SKU	Name
2691-3208	Tank Lid Gasket Viton™ BPS9 Pro	2693-3301	Battery Charger 2.5A BPS9 Pro	2695-3202	Viton™ Pump Inlet Gasket BPS9 Pro
2692-3300	Battery 18V 5.2AH Li-Ion BPS9 Pro	2693-3109	Gun Jet BPS9 Pro	2620-4077	Locknut Handle BPS9 Pro



SKU	Name	SKU	Name	SKU	Name
2692-3108	Spray Wand Anti Drip BPS9 Pro	2695-3101	Hose Recoil BPS9 Pro	2698-3104	Adapter QC to 110 degree Fan Jet BPS9 Pro
2699-3105	Cone Jet 120 µm BPS9 Pro	2697-3103	Fan Jet 110 degree BPS9 Pro	2696-3102	Fan Jet 60 degree BPS9 Pro



SKU	Name	SKU	Name	SKU	Name
2697-3204	Nut & Bolt Kit BPS9 Pro (one set)	2694-3302	Pump BPS9 Pro - (recirculating diaphragm pump)	2691-3107	Circuit Board BPS9 Pro - (waterproof variable speed)
2699-3206	Tank Drain Plug Cap BPS9 Pro	2694-3201	Handle Replacement BPS9 Pro	2693-3200	Cotter Pin Wheel Mount BPS9 Pro

WARRANTY

WARRANTY COVERAGE

Hydro-force warrants to the original purchaser that the Hydro-force® product will function as intended under normal use and consistent maintenance, subject to certain limitations and exclusions. At the discretion of Hydro-force, we will repair or replace any parts found to be defective in material or workmanship without charge, apart from shipping and handling costs, during the covered warranty period.

WARRANTY PERIOD

The warranty period will begin from the date of retail purchase and exist for one (1) year, regardless of when the unit is placed in service. The warranty period is not extended if we opt to repair or replace the product in question.

WARRANTY CLAIMS

Hydro-force reserves the right to require the return of the defective product, proof of purchase to file a claim under this warranty.



EXCLUSIONS AND LIMITATIONS

Hydro-force only warrants products purchased from authorized distributors. Products purchased from unauthorized resellers or distributors are not subject to warranty services.

The limited warranty does not cover damages, loss, or injury resulting from transportation, storage, accident, improper use, neglect, modifications, normal wear, or operation not in accordance with the instruction manual. Hydro-force reserves the right to change the design or specifications of any product without obligation to modify previously produced units.

ANY IMPLIED WARRANTIES, INCLUDING THE IMPLIED WARRANTY OF MERCHANTABILITY AND FITNESS FOR CONSUMER USE, ARE LIMITED TO THE DURATION SPECIFIED ABOVE. HYDRO-FORCE'S LIABILITY IS LIMITED SOLELY TO THE REPAIR OR REPLACEMENT OF THE NON-FUNCTIONING PRODUCT OR PART. HYDRO-FORCE EXCLUDES LIABILITY UNDER THIS WARRANTY FOR ANY AND ALL INCIDENTAL AND CONSEQUENTIAL LOSS OR DAMAGE.

In no event shall Hydro-force be liable for any incidental, special, consequential or punitive damages, or for any costs, attorney fees, expenses, losses or delays alleged to be as a consequence of any damage to, failure of, or defect in any product including, but not limited to, any claims for loss of profits.

Some states do not allow limitations on how long an implied warranty lasts, or the exclusion or limitation of incidental or consequential damages, so these limitations or exclusions may not apply to you. This warranty gives you specific legal rights and you may have other rights which vary from state to state.



www.hydroforce.com

+1(800)637-3789

sales@hydroforce.com